

HP MUR/PLAFOND RG-180F/EN5424 ENTIEREMENT EN METAL

RG

180F

EN
5424

M
U
R

—
P
L
A
F
O
N
D

H
A
U
T
P
A
R
L
E
U
R



- ANTIFEU & **RESISTANT AUX CHOCS**
- VERSION RESISTANTE AUX CHOCS **CERTIFIEE DIN 18032/III** EN OPTION
- EQUIPEMENT **ANTI-VANDALISME**
- 50-HZ-TRANSFO STABLE
- ADAPTATION **100-V-PROTEGEE**
- LIVRABLE EN **DIVERS COULEURS RAL**
- VERSION **POUR ZONES HUMIDES** LIVRABLE
- HP AVEC **BORNE CERAMIQUE ET THERMO-FUSIBLE** LIVRABLE EN OPTION

- **VERSION RG-180F/EN-5424-CERTIFIEE:**
NUMERO COMMANDE:

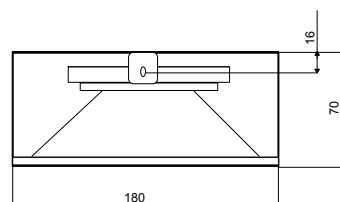
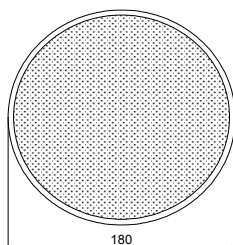
RG-180F/EN-5424

NR-CERTIFICAT: 1293-CPD-0231

CARACTÉRISTIQUES TECHNIQUES:

RG-180F/EN5424

Haut-parleurs:	10/15W Large Bande avec cône HF
Ligne 100V:	6-3-1.5W
Bande passante:	100 – 16.000 Hz
EN-Sensibilité 1W/4M:	81,0 dB
Pression acoustique max 6W/4M:	89,5 dB
Pression acoustique 1W/1M max EASE/Ulysses:	103 dB (1,5 & 3,5 KHz)
Pression acoustique 6W/1M max EASE/Ulysses:	109 dB (1,5 & 3,5 KHz)
Angle d'ouverture H (0,5/1/2/4 KHz):	115°/115°/94°/33°
Angle d'ouverture V (0,5/1/2/4 KHz):	115°/115°/94°/33°
Dimensions:	180 mm x 70 mm
Poids:	1 kg
Couleur:	RAL 9010



EN-5424-PAGE-18-A

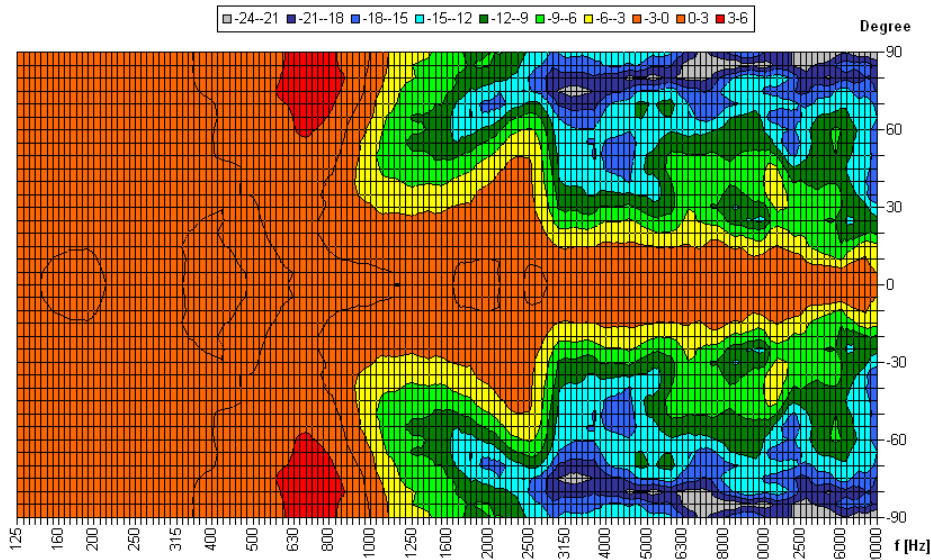
ANGLE D'OUVERTURE HP MUR/PLAFOND RG-180F/EN5424

Proc. de mesure	Axe	500Hz	1000Hz	2000Hz	4000Hz
EN5424	HOR	115°	115°	94°	33°
EN5424	VER	115°	115°	94°	33°
EASE/ULYSSES	HOR	180°	180°	100°	50°
EASE/ULYSSES	VER	180°	180°	100°	50°

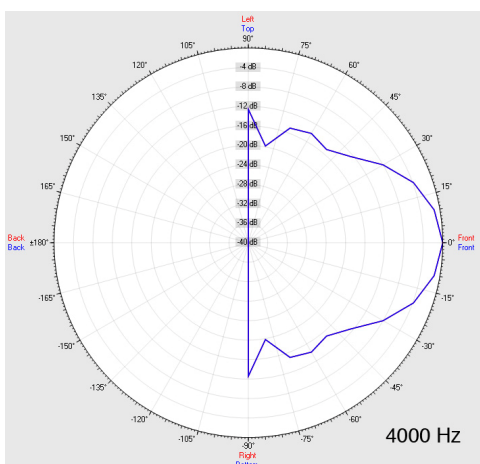
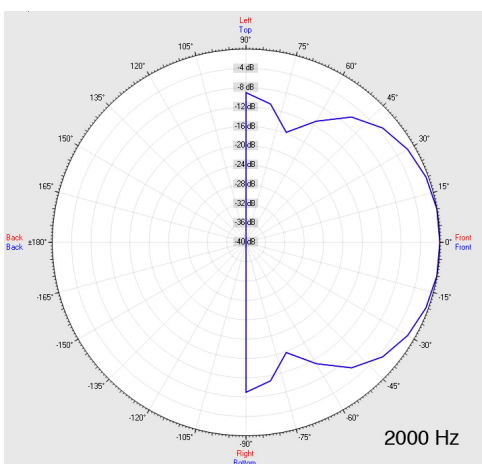
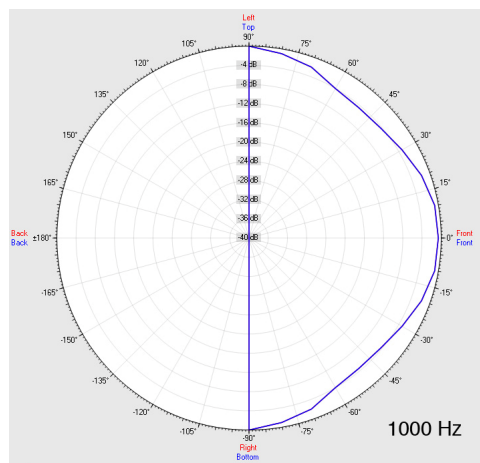
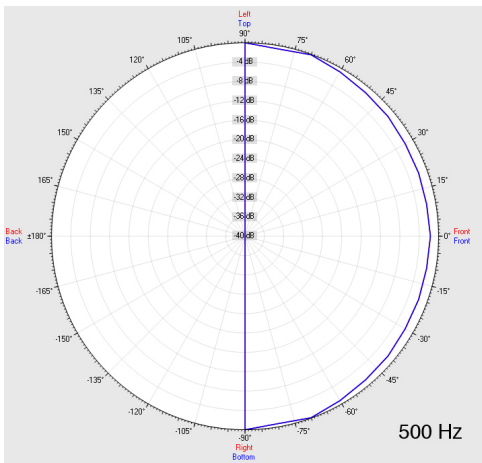
Source Data: D:\Strauch\Elko-Schmid\RG180F\Daten\HOR\Dummy.POX

Copyright by Four-Audio GmbH & Co KG Licensed to AAC

Horizontal Isobars of: Elko-Schmid RG180 Grenzfläche



Parameters: Cyclic Move: 0° ; Symmetry: 0..+180 sym ; Freq.Smooth: 1/3 Oct ; Ang.Resol: 5° ; Rel. to: 0° Axis 0°



RG

180F

EN
5424

M
U
R

P
L
A
F
O
N
D

H
A
U
T
P
A
R
L
E
U
R